

## AGRITURISMO IN TOSCANA

# La Colombaia



Barberino Val d'Elsa  
FIRENZE



### ANREISE

Autobahn Brenner-Rom, Ausfahrt Firenze Certosa,  
• weiter Richtung Siena bis zur Ausfahrt Poggibonsi Nord  
• dort fahren Sie Richtung Barberino Val d'Elsa, nach 2 Km in S. Martino ai Colli sehen Sie eine Beschilderung "La Colombaia" ihr Urlaubsziel!



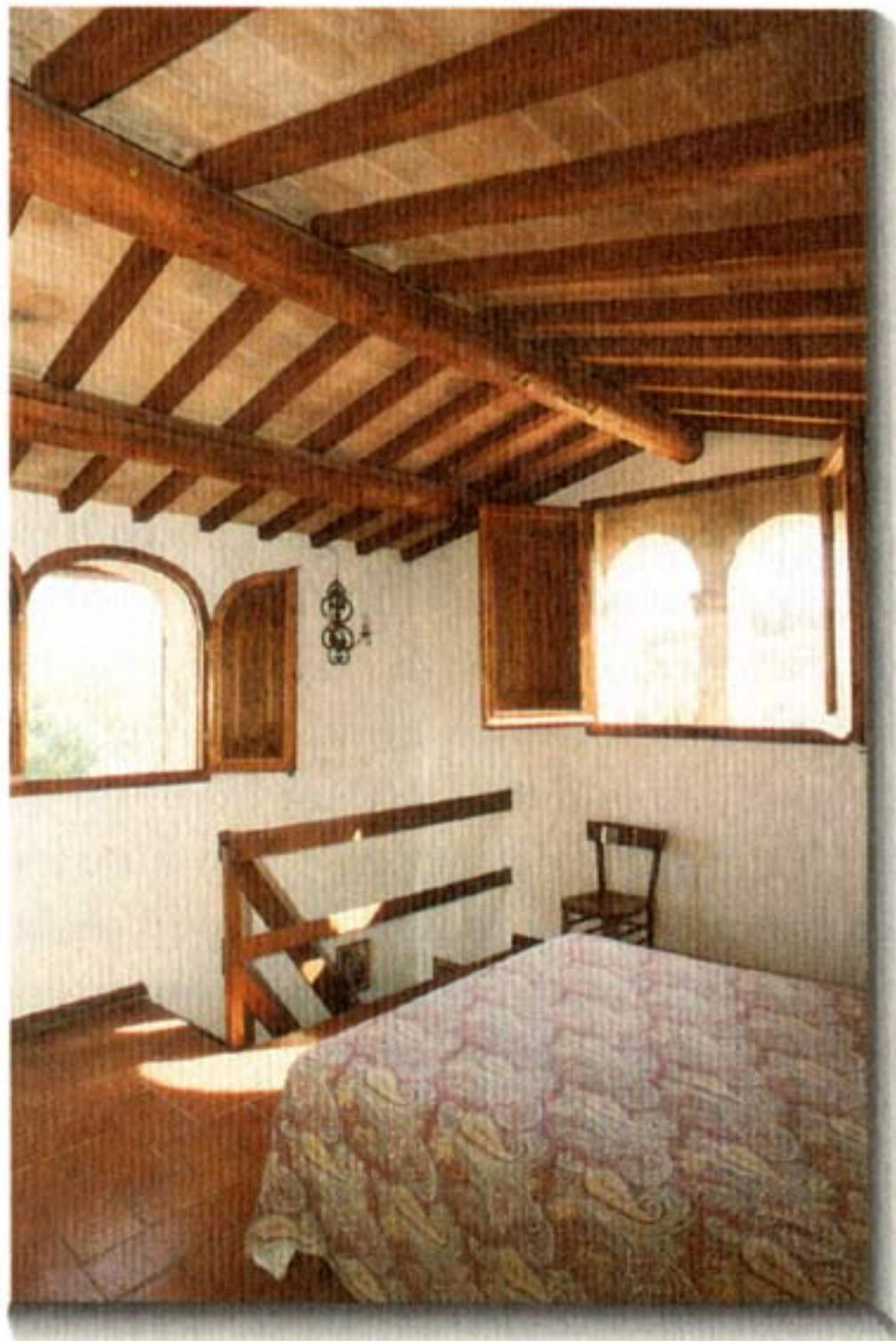
Azienda Agricola "LA COLOMBAIA"  
Località S. Martino - SS n. 2 Cassia Km 258  
50021 BARBERINO VAL D'ELSA (FI)  
Tel. 055/8075103 - 055/225618 - 055/223610  
Cellulare 0338/5238377 - 0335/6607838

**E. MAIL - [lacolombaia@tin.it](mailto:lacolombaia@tin.it)**

**PERCORSO CONSIGLIATO PER L'ARRIVO**  
Autostrada Brennero-Roma, uscita Firenze Certosa • Superstrada Firenze - Siena, uscita Poggibonsi Nord • Strada statale Cassia direzione Barberino Val d'Elsa, dopo 2 Km località S. Martino ai Colli segnalazione turistica per "La Colombaia".

### ARRIVAL

Motorway Brennero-Roma, exit Firenze Certosa  
• continue direction Siena until Poggibonsi Nord  
• then continue direction Barberino Val d'Elsa, after 2 Km. you arrive at S. Martino ai Colli, follow the signs "La Colombaia", your vacation resort.



**L**a Colombaia, inserita nel tipico paesaggio toscano, caratterizzato da dolci colline, borghi medievali e vigneti, è al centro di una zona ricca di interessi artistici, storici e culturali: dista infatti 30 minuti di macchina da Firenze e da Siena, 45 minuti da Volterra e 15 minuti da San Gimignano. A 5 minuti Poggibonsi con negozi di ogni genere; a 15 minuti tennis, equitazione e piscina. A un'ora il mare!

gorgeous vineyards. Besides, all this is right in the middle of a region which is world-known for its many artistic, historical and cultural sites: Florence and Siena can be reached in 30 minutes by car, Volterra in 45 minutes, and San Gimignano in 15 minutes. Poggibonsi, an important commercial town with stores of any kind, is only 5 minutes away. In 15 minutes you can also reach a public country club with many facilities including a swimming-



**L**a Colombaia is located in the midst of the most typical Tuscan countryside, with its sweet hills, its medieval hamlets and

pool, tennis-courts and riding grounds. The wonderful Tuscan coast and its many sea-resorts are only 1 hour away.



**L**a Colombaia befindet sich in einer typisch toskanischen Landschaft, umgeben von schönen Hügeln, Weinbergen, mittelalterlichen Dörfern und liegt inmitten einer Zone, die reich an künstlerischem, historischem und kulturellem Interesse ist: das Gut liegt 30 Minuten mit dem Auto von Florenz und Siena, 45 Minuten von Volterra und 15 Minuten von San Gimignano entfernt. In 5 Minuten erreichen Sie Poggibonsi mit seinen zahlreichen Geschäften, in 15 Minuten sind Tennisplätze, Reitschule und Schwimmbad erreichbar. In einer Stunde sind Sie am Meer.